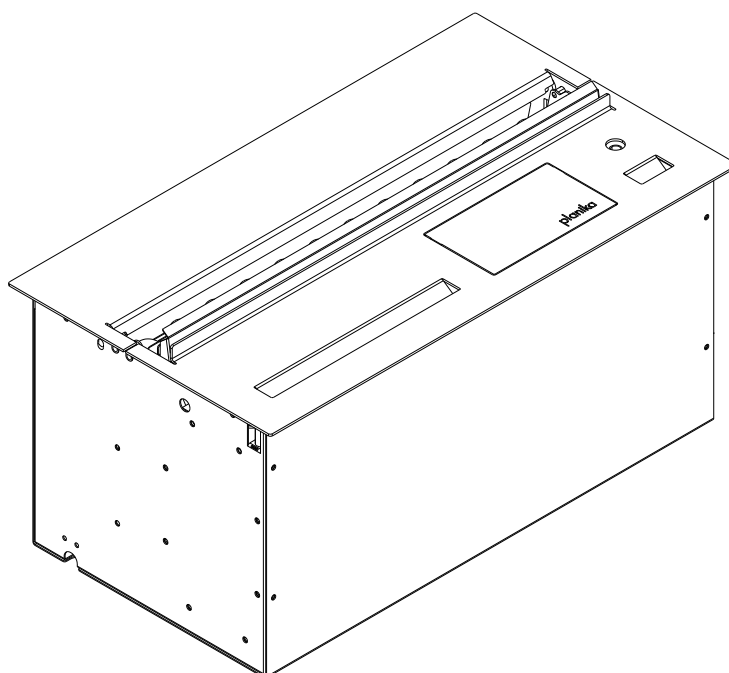


EN Installation manual



WARNING

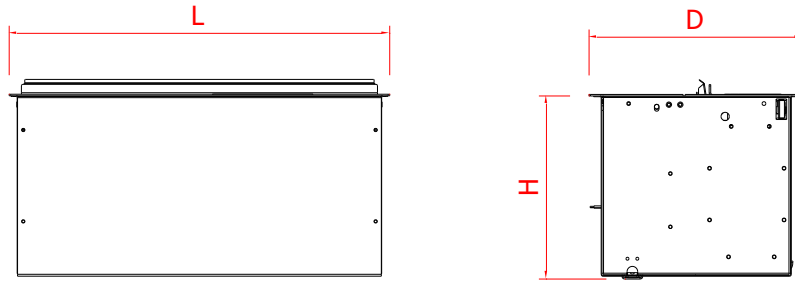
EN This manual applies only to the installation and operation of the PD device.

EN	INSTALLATION MANUAL.....	3
EN	INSTRUCTION MANUAL	5

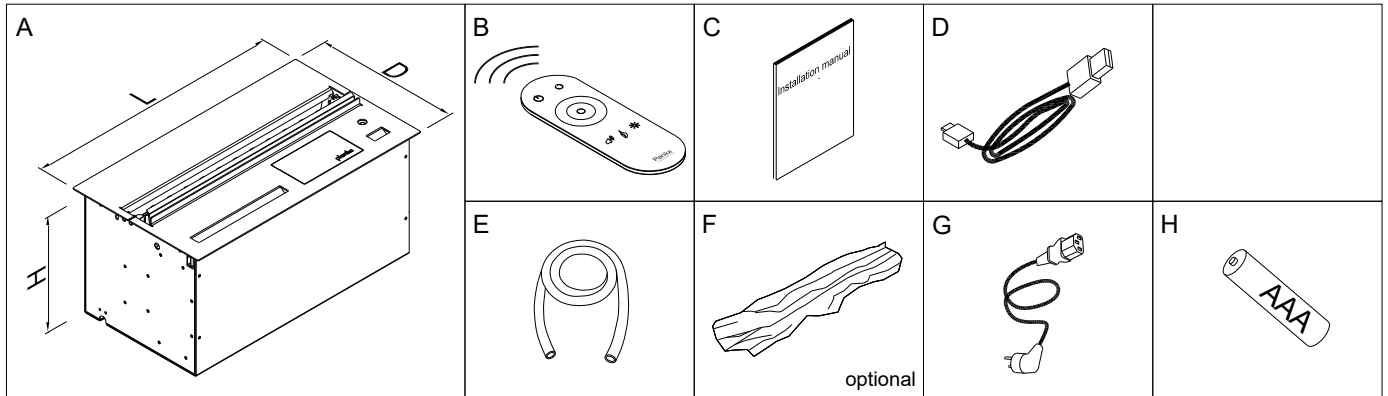


The product is a decorative device that produces a flame effect. Familiarize yourself with the enclosed documentation before installing and commissioning the device, as well as local regulations for electrical appliances.

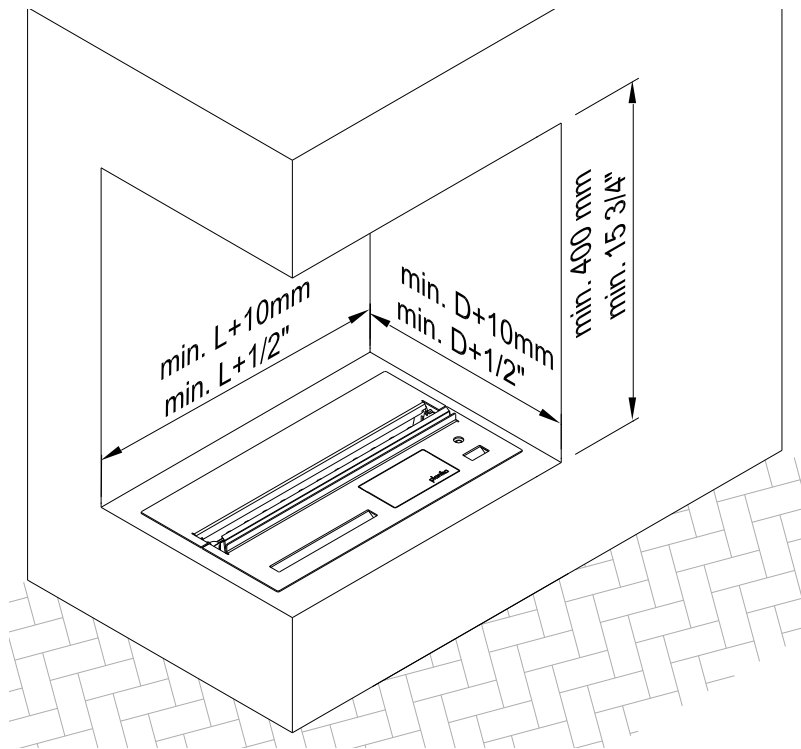
1. For indoor use and in housing only. Min. temperature of use is 10°C.
2. Natural air exchange rate in room
3. Do not use the device in drafty spaces. In case of untypical installations like SPA or Sauna contact Project Department projects@planikafires.com
4. Do not cover top ventilation openings of the device.
5. Only use manufacturer-approved decorative accessories for Planika products. Follow the provided guidelines to prevent damage to the unit.
6. Only use the plugs/electrical cords supplied with the fireplace.
7. We recommend placing a CO2 or dry powder fire extinguisher nearby the device
8. For service purposes, the surrounding must allow for easy removal of the device.
9. Keep children, animals and unauthorized persons away from the device.
10. Please keep the product packaging for the duration of the warranty period. The packaging may be necessary in case the product needs to be returned, exchanged or repaired.
11. Do not start the device if water spills outside the tank.
12. Do not alter or modify the construction of the device.
13. Empty the water tank before transportation.
14. Do not leave the running device unattended.
15. Use only filtered (decalc), distilled or demineralized water
16. If the device will not be used for more than 2 weeks - drain the water from the tank
17. Do not reuse the water pumped out of the device.
18. During operation, you may hear the sound of water splashing associated with steam creation.



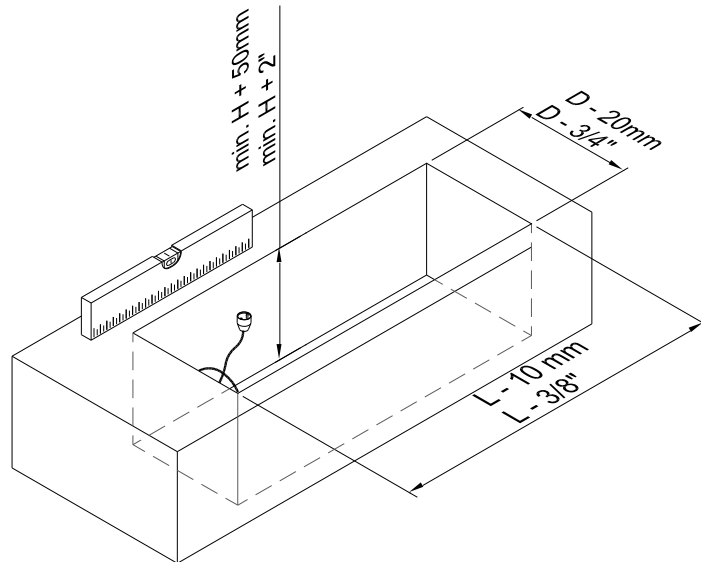
Device	L [mm] ["]	D [mm] / ["]	H [mm] / ["]
PD 500	500 19 3/4	280 11 1/8	240 9 1/2
PD 1000	990 39		
PD 1500	1490 58 5/8		
PD 2000	1990 78 3/8		



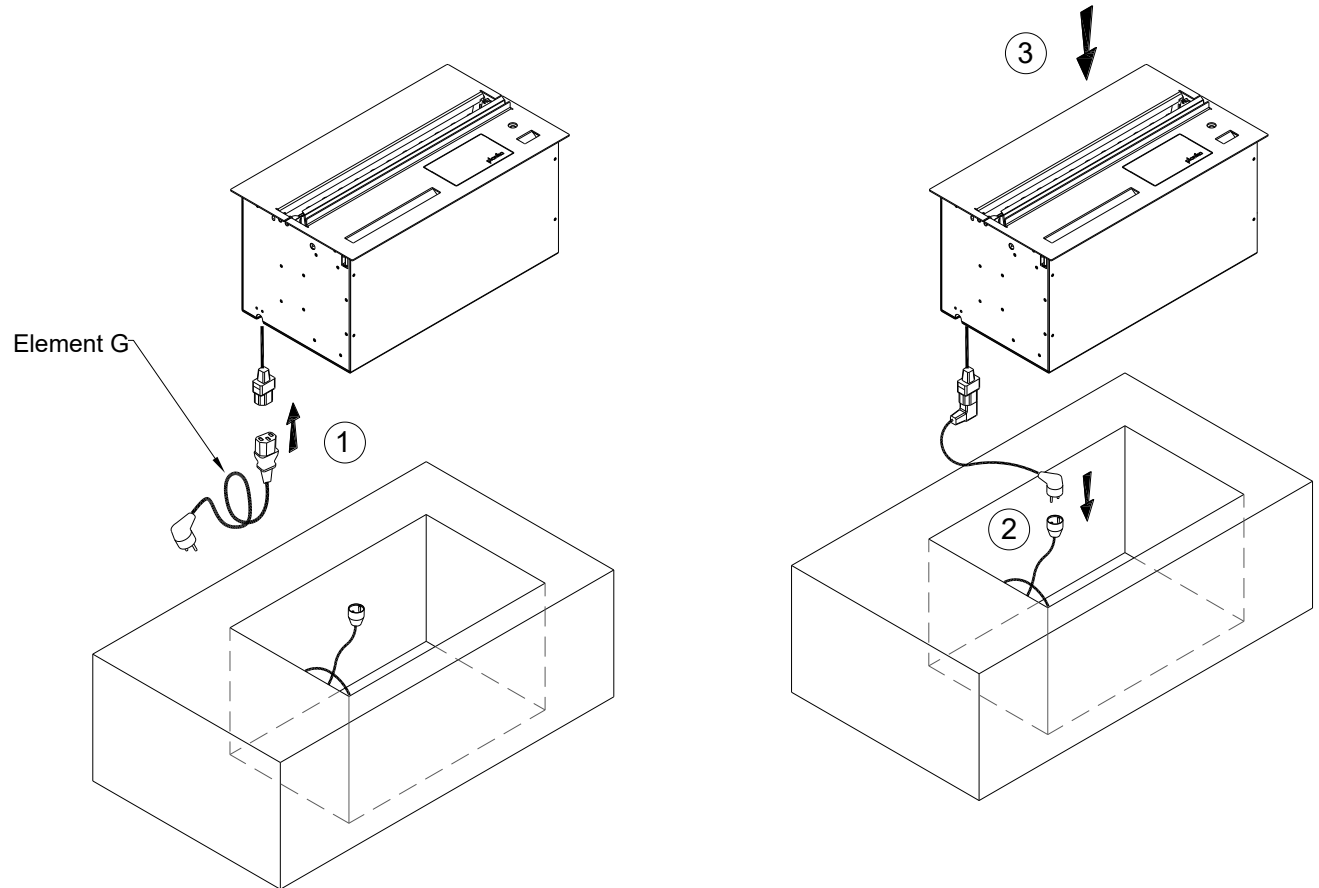
	EN	Quantity
A.	Device	1
B.	Remote control	1
C.	Installation and operating manual	1
D.	USBC cable	1
E.	Water hose	1
F.	Decorative logs	3 – PD 500; 6 – PD 1000; 9 – PD 1500; 12 – PD 2000
G.	Power cord (depending on market)	1
H.	AAA batteries for remote control	2



EN	<p>The product housing must be made of moisture-resistant materials. Only fasteners and adhesives that are resistant to humid environments should be used.</p> <p>Make sure that the housing is made with the correct dimensions according to the drawing.</p>
----	--

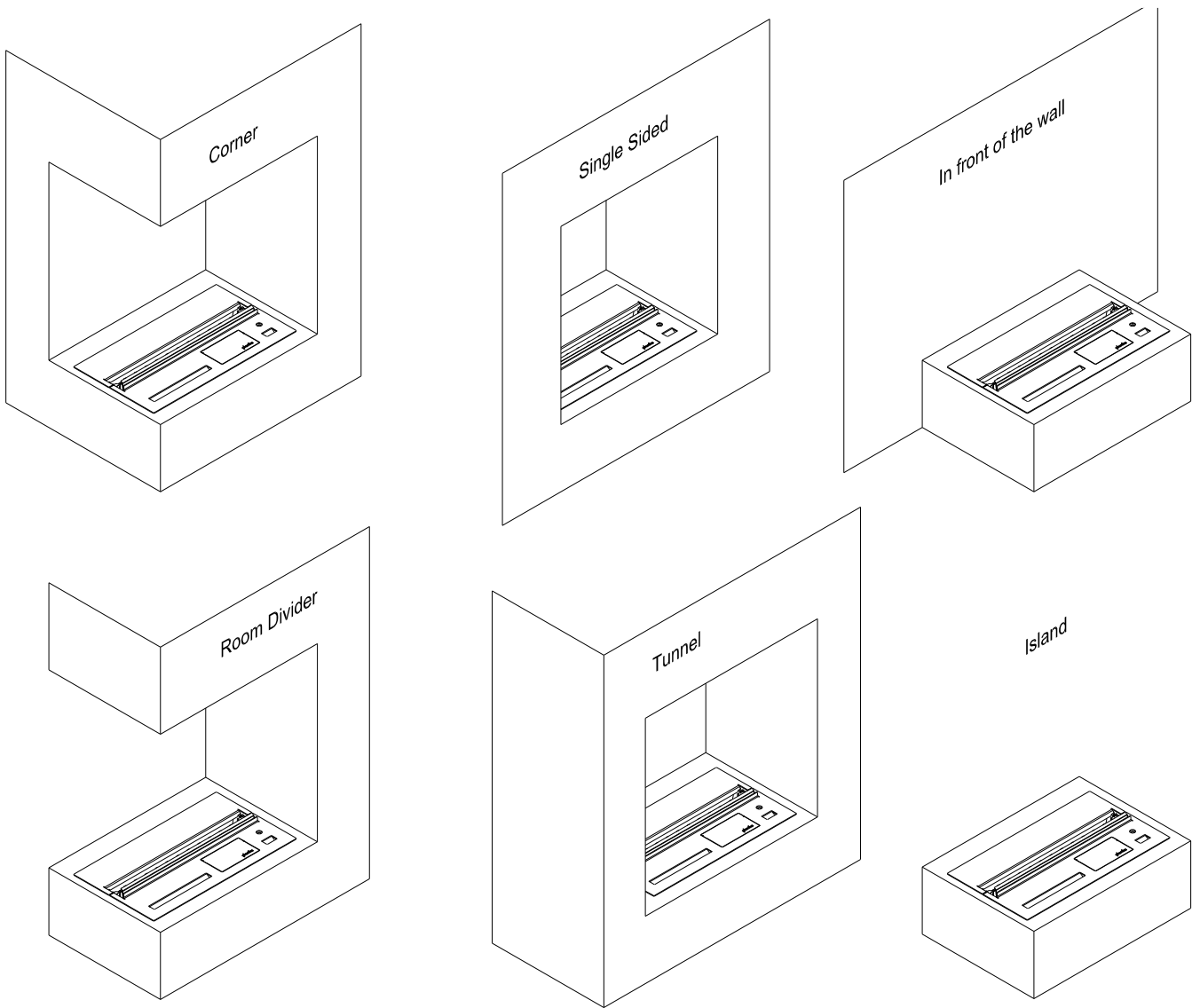


EN Prepare a cavity for the device based on the drawing. Make sure that the top surface will be leveled. Provide the power cord connection.

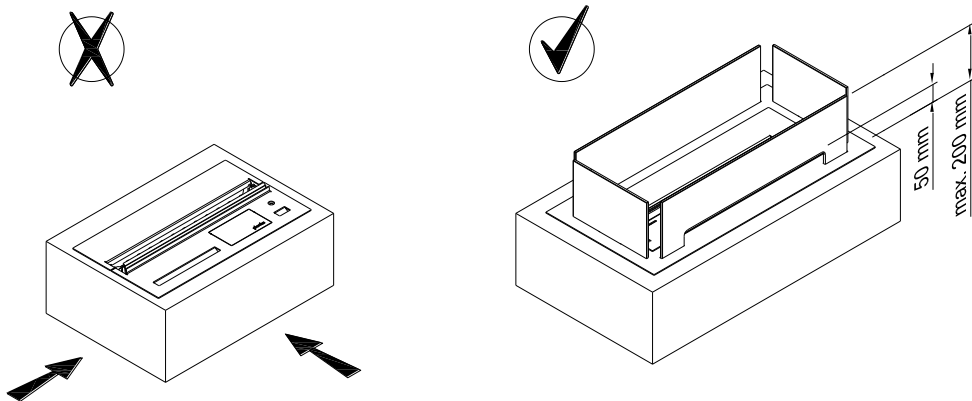


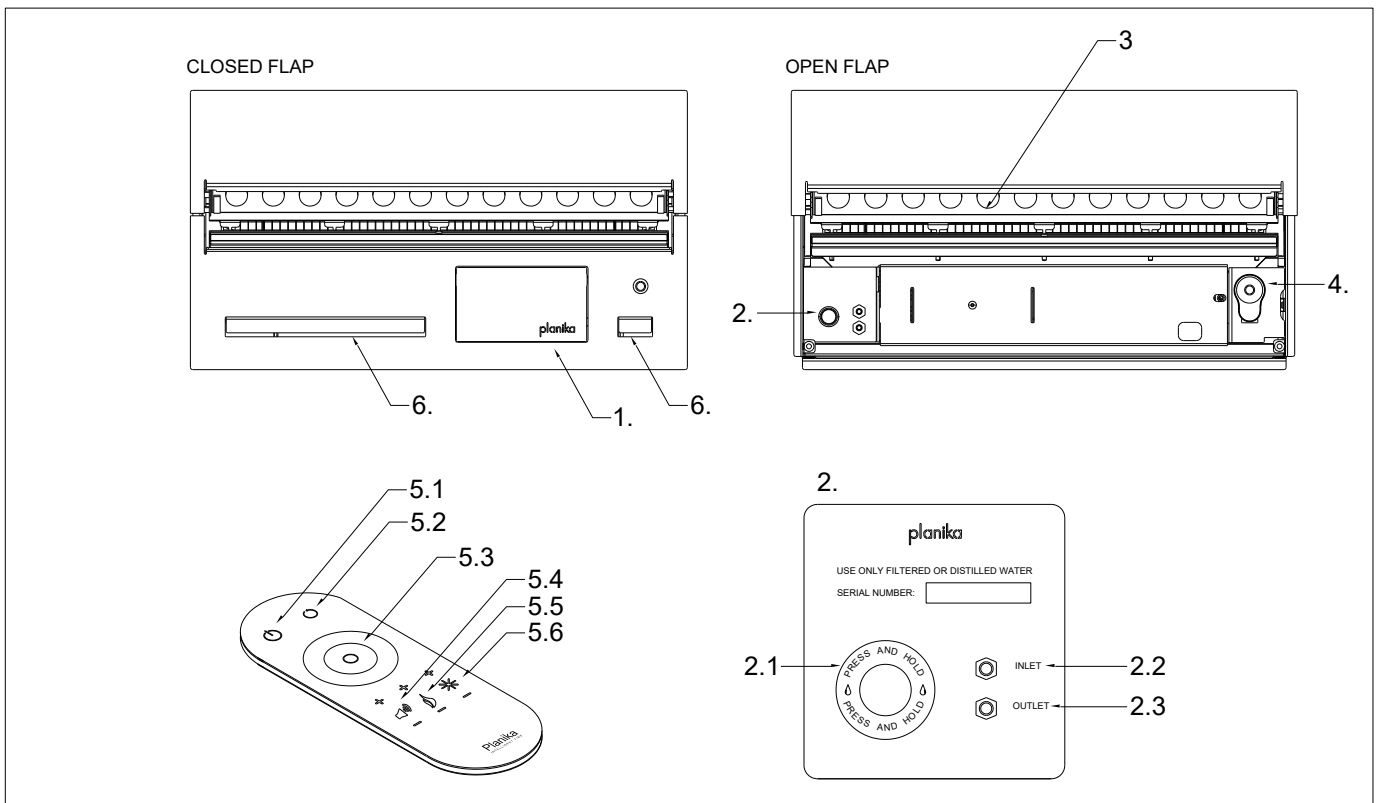
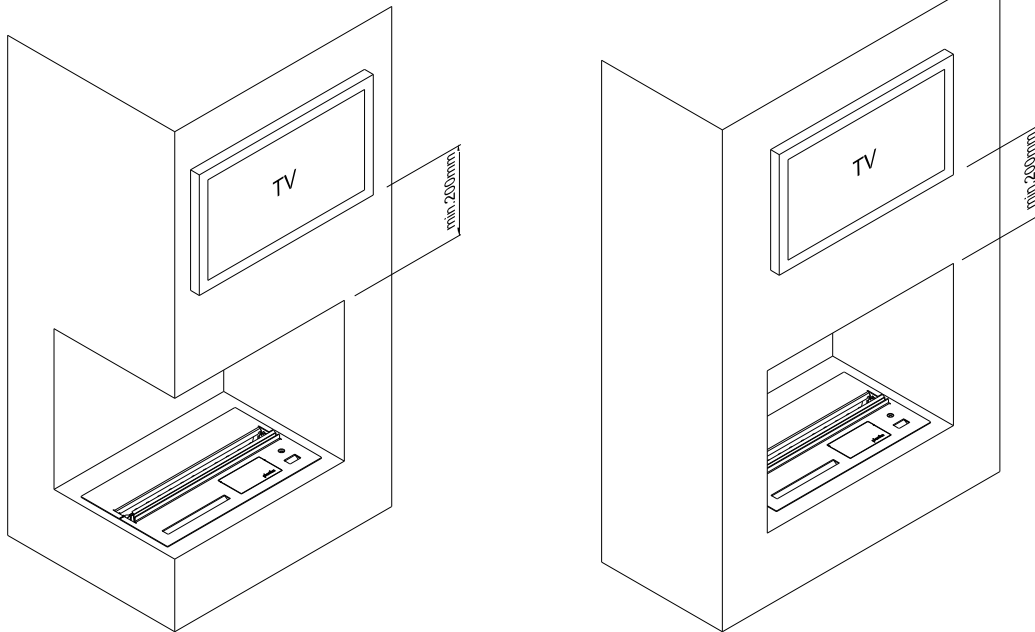
EN Connect the power cable supplied with the product to the power cord protruding from the device. Then connect the product to the mains (230/115 V voltage – depending on the market) and place the device in the recess.

S



EN If installing in a location with air movement, protect the product by closing the open sides with a glass panel. The front glass must be made with 50 mm cutout. Maximum glass height 200 mm – measured from the surface of the housing.



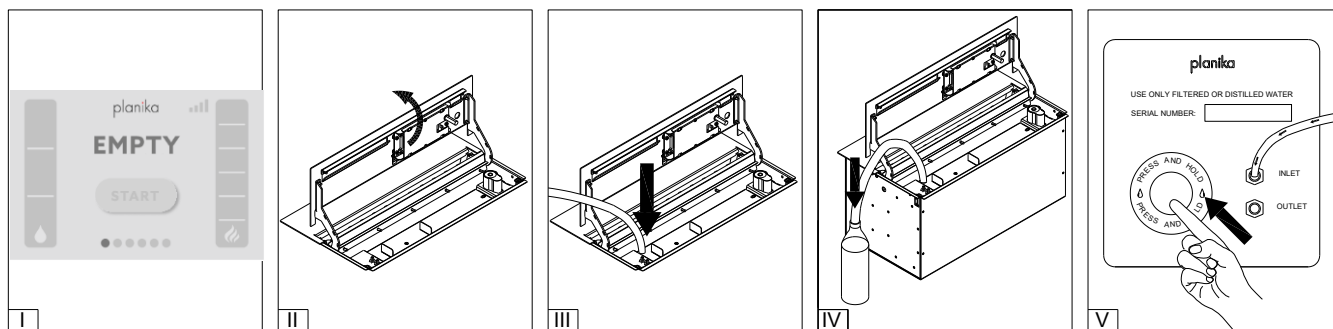


EN

1. Control panel
2. Water supply panel
 - 2.1. Start/Stop pumping Button
 - 2.2. Water Inlet
 - 2.3. Water Outlet
3. Flame effect module
4. Perfume dispenser
5. Remote control
 - 5.1. On/off
 - 5.2. Reset
 - 5.3. Effect colour adjustment
 - 5.4. Effect volume adjustment
 - 5.5. Effect height adjustment
 - 5.6. Effect brightness adjustment
6. Air intake / handle


STARTING THE DEVICE FOR FIRST TIME

Before starting the device open the flap, **EMPTY** will indicate on the screen (I). Open the main flap (II) and plug the fuel hose into the **INLET** (III). The other unplugged end of the hose put into the water tank / vessel (IV). **PRESS AND HOLD** button to refill (V). The pump will prevent further refilling when the tank reaches full capacity.

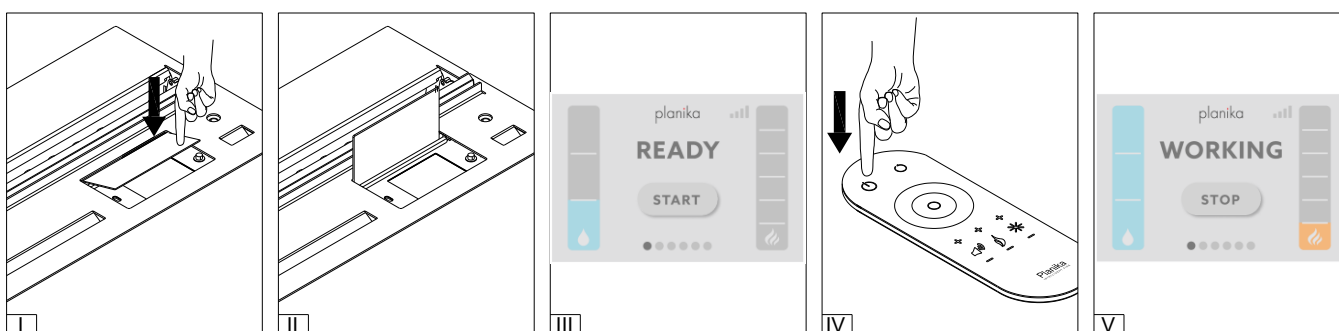


TURNING ON / OFF THE DEVICE

Open the flap (I) by pressing the lower right corner of the flap and press **START / STOP**

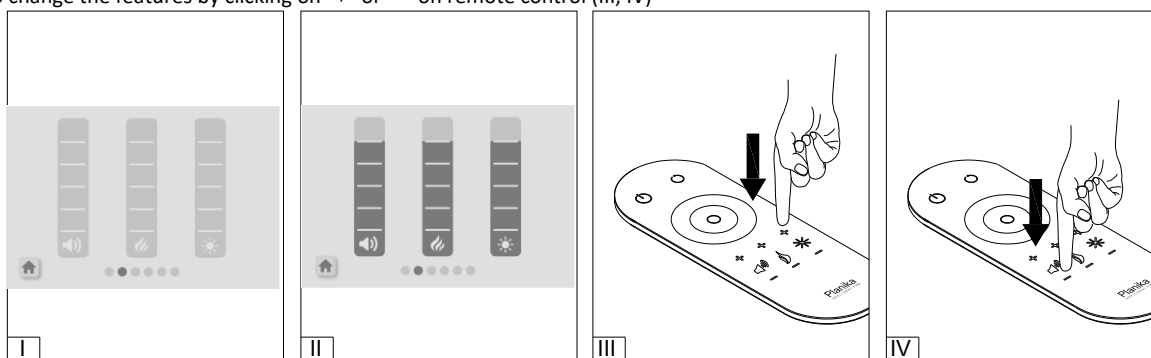
You can also turn on / off device by pressing  on the remote control.

WARNING. Do not use the product without fragrance oils! If the fragrance bottle is empty, go to point **FRAGRANCE DISPENSER**



ADJUSTING THE FLAME EFFECT

Swipe the screen to go to the next menu page. To adjust the volume, flame effect height, or brightness, tap the desired level for each feature. (I, II) You can also change the features by clicking on "+" or "-" on remote control (III, IV)



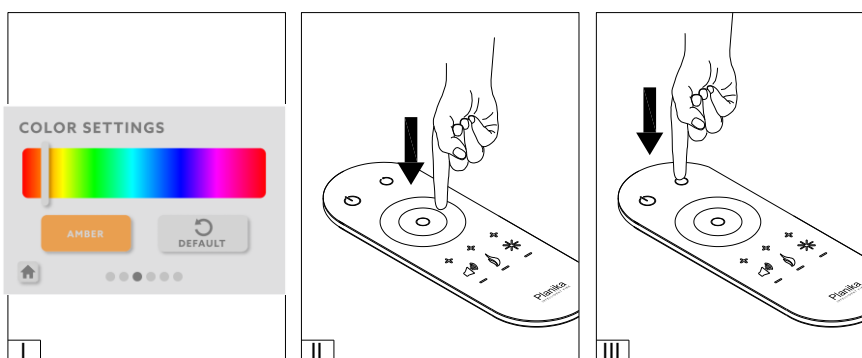
Get back to the previous page by swiping the screen back or get back to the 1st screen by tapping on

ADJUSTING THE FLAME EFFECT COLOR

Swipe the screen to go to the next menu page. To manually adjust the flame effect color tap the desired level on screen or remote control. (I, II)

You can also set the **AMBER** or back to **DEFAULT** by tapping on dedicated screen. **DEFAULT** can be set by tapping on remote control. (II, III)

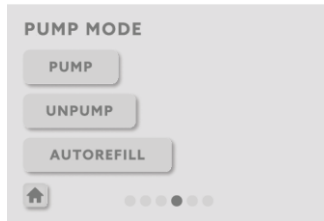
Please note that when set to 'default', the steam will characteristically fluctuate, imitating the behavior of a flame.



Get back to the previous page by swiping the screen back or get back to the 1st screen by tapping on

REFILLING, PUMPING OUT AND AUTOREFILL WATER

Swipe the screen to go to the next menu page. Choose one of the available pump modes if you need to change the pumping mode:

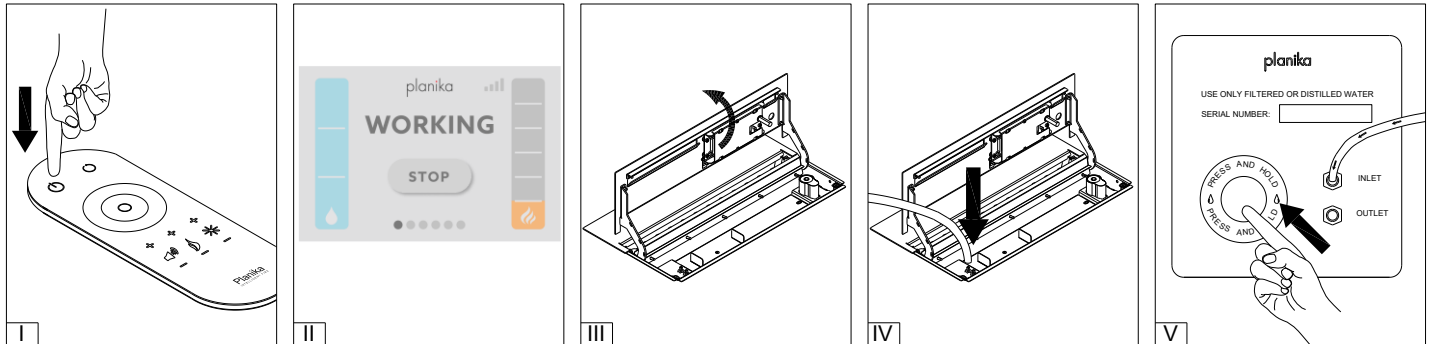


Get back to the previous page by swiping the screen back or get back to the 1st screen by tapping on

- **PUMP** – Use to manually refill the water into the device's tank. **(Default setting)**

Stop the device when it is working (I, II). Open the main flap and connect the water hose to INLET (III, IV) then PRESS AND HOLD button to refill (V). The pump will prevent further refilling when the tank reaches full capacity.

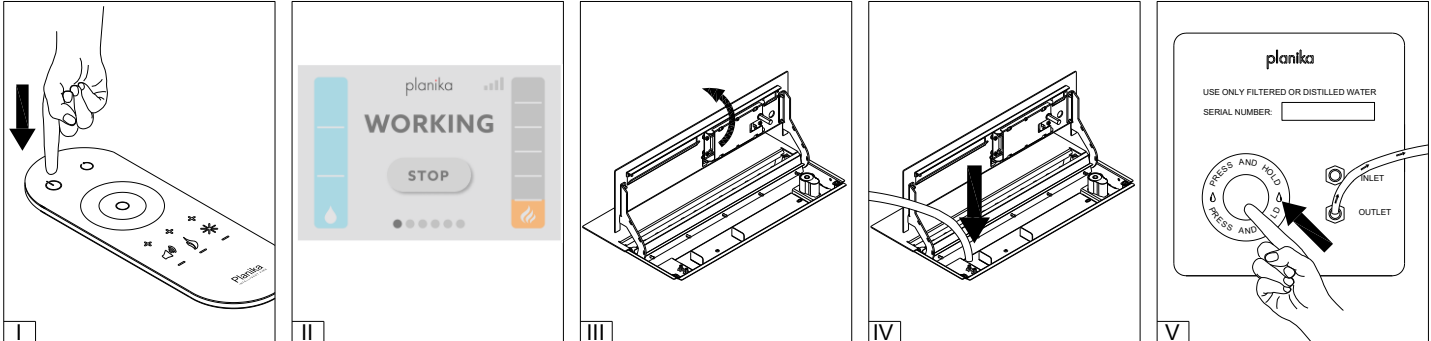
Please note that device can be only refilled when is not working.



- **UNPUMP**- Use to manually empty the water tank.

Stop the device when it is working. Open the main flap and connect the water hose to OUTLET then PRESS AND HOLD button to empty the water tank

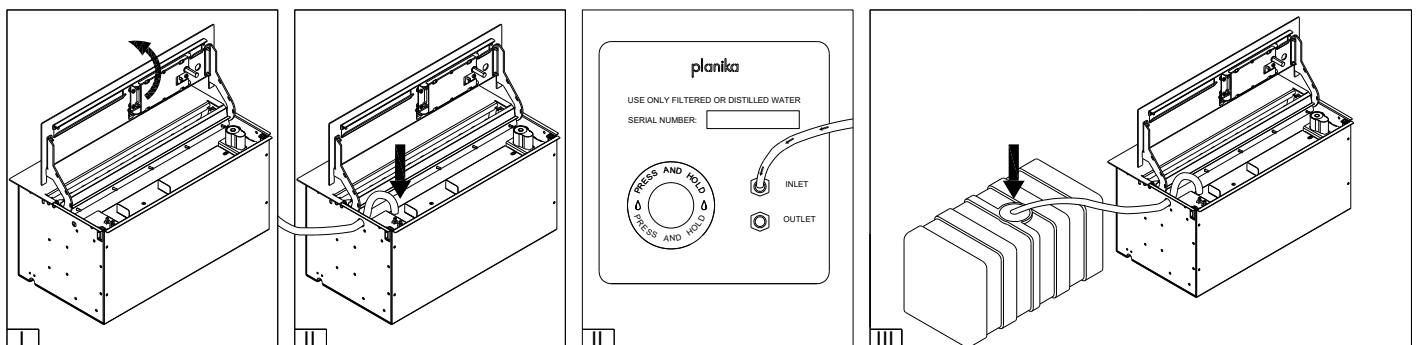
Please note that device can be only unpumped when is not working.



- **AUTOREFILL** – Use this feature to automatically refill water into the device's tank.

Open the main flap (I) before starting the device and connect the water hose to the **INLET** (II) ensuring it is secured against detachment. Place the other, unplugged end of the hose into the external tank (III). The external tank may be positioned at the same level as, or lower than, the device's top plate. The device will automatically refill the water when the minimum level is reached.

Please note that the device will automatically refill when the tank is empty – there is no need to stop the device.

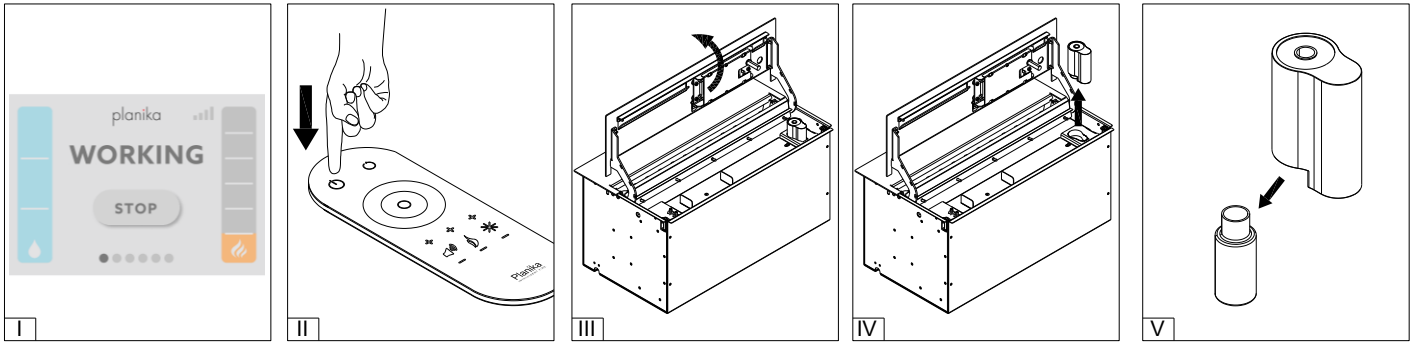


FRAGRANCE DISPENSER

Swipe the screen to go to the next menu page. To turn on / off or adjust the fragrance dispenser, tap the desired feature. Get back to the previous page by swiping the screen back or get back to the 1st screen by tapping on

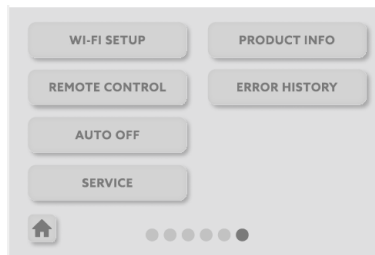


To replace the fragrance dispenser first turn off the device (I, II). Open the main flap (III) and remove the fragrance dispenser from the slot (IV). Replace the scent bottle with new one / refill it with the new one (V) and mount the fragrance dispenser back.

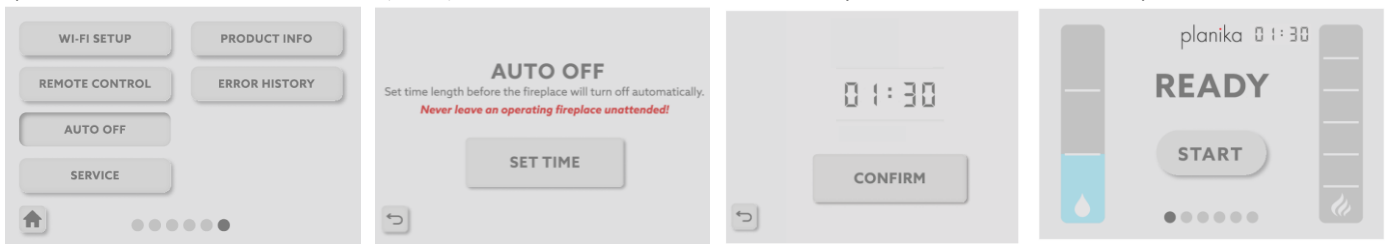


MAIN MENU

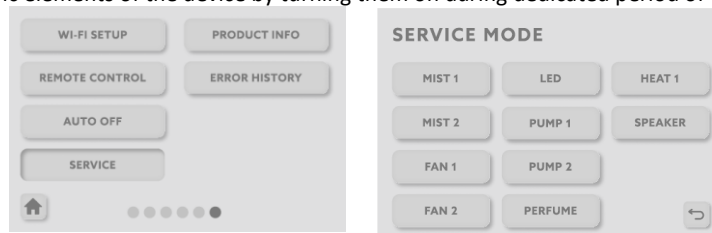
Swipe the screen to go to the next menu page. Choose pump mode from available options:



- **WIFI SETUP** – Use to set the Wifi connection (will not be available in current model)
 - **REMOTE CONTROL** – Use to pair the remote control with the device
 - **AUTO OFF** – Use to set the automatic turning off procedure.
- Tap **SET TIME** and then choose the time (hours) after which the device will automatically turn off. Confirm. Time will appear on main screen.



- **SERVICE**- Use to check the specific elements of the device by turning them on during dedicated period of time.



- **PRODUCT INFO**- Use to check the information about the device like serial number, software version or device IP



- **ERROR HISTORY**- Use to check the error list



Get back to the previous page by swiping the screen back or get back to the 1st screen by tapping on

MAIN MENU DECORATIVE ELEMNTS (OPTIONAL)

Once your enclosure has been built to the required dimensions and the electrical connection has been installed with the product in its final position, you can arrange additional logs on top plate of the device.

PD 1500 logs set arrangement below



Quantity of logs set for each device length

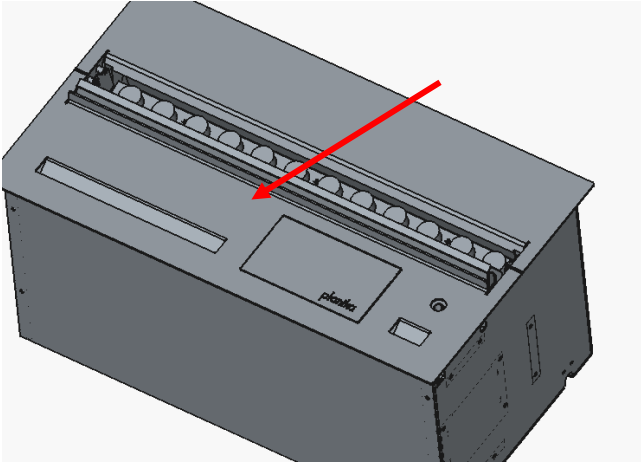
Device	Quantity of logs
PD 500	3 pcs (small set)
PD 1000	6 pcs (big set)
PD 1500	9 pcs (small and big set)
PD 2000	12 pcs (two big set)

MAINTANCE

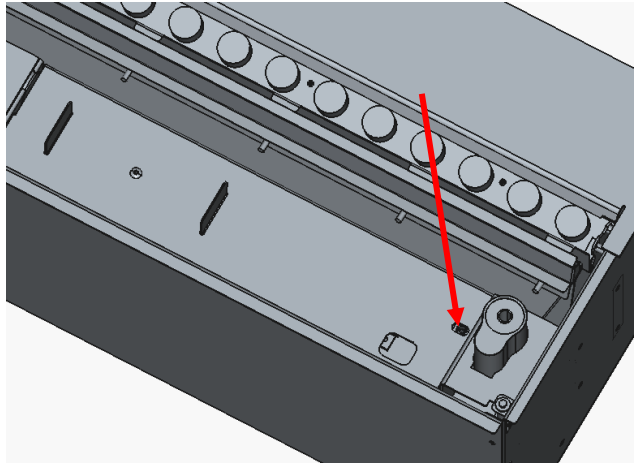
WATER - Use only filtered (decalc), distilled or demineralized water. It is forbidden to reuse water pumped out of the device. If you do not use the device for more than 2 weeks, drain the water from the device and refill the device with fresh water for reuse.

MIST GENERATOR - To replace the mist generator:

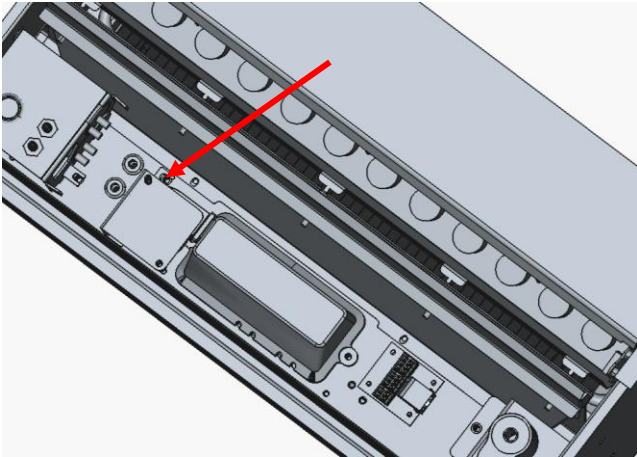
1. Open the cover.



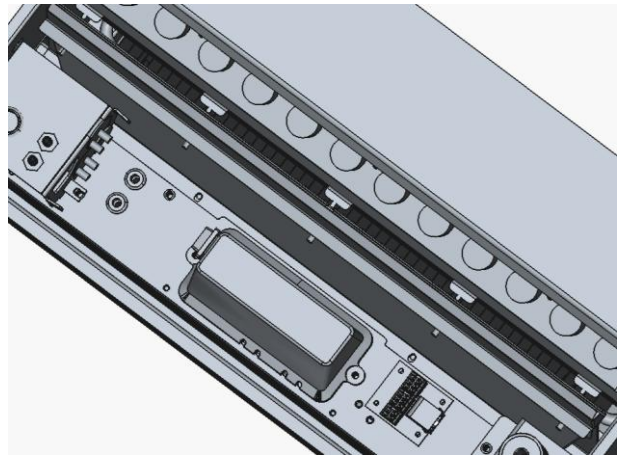
2. Remove the screw securing the cover and remove the cover.



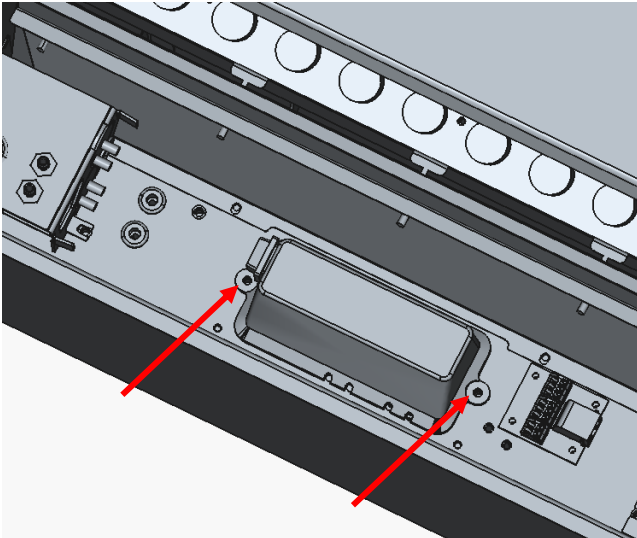
3. Unscrew the fan screw by one turn.



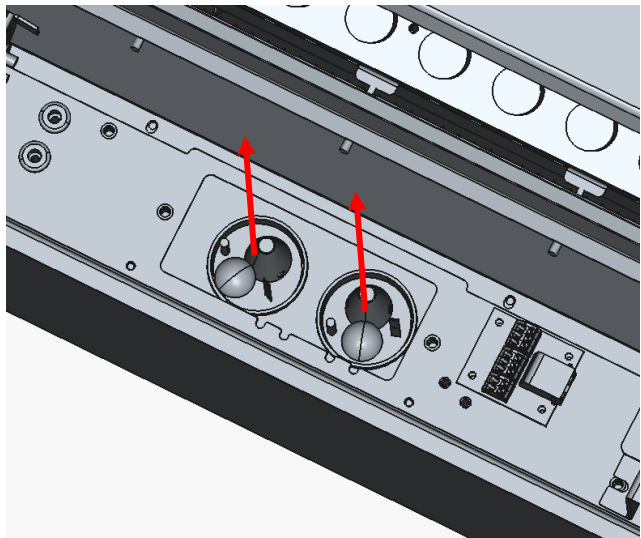
4. Move the fan.



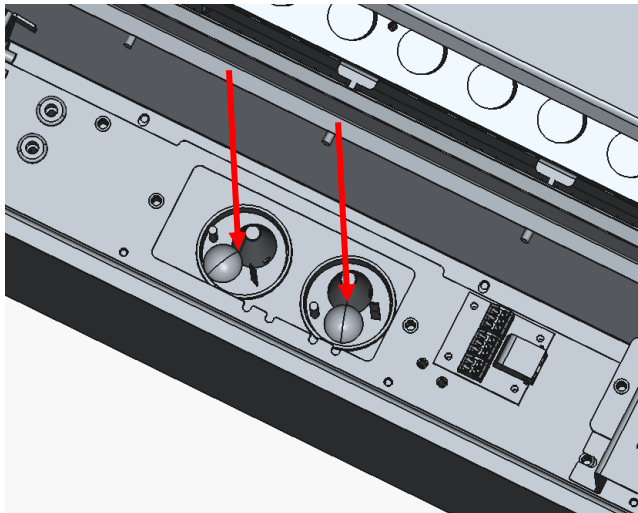
5. Remove the cover screws and remove the cover.



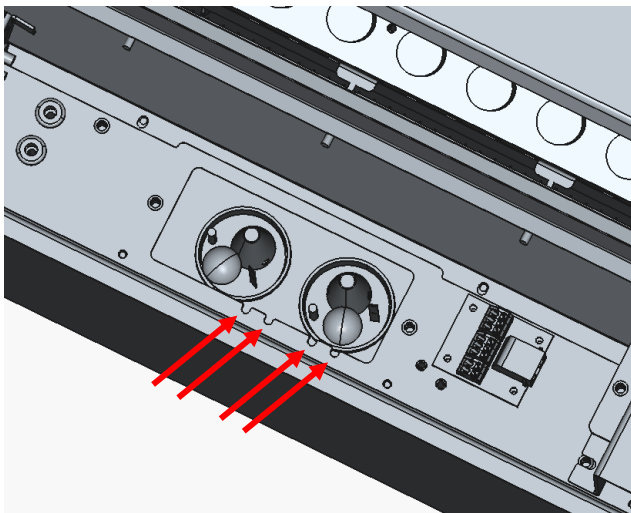
6. Firmly slide the generators from the holder.



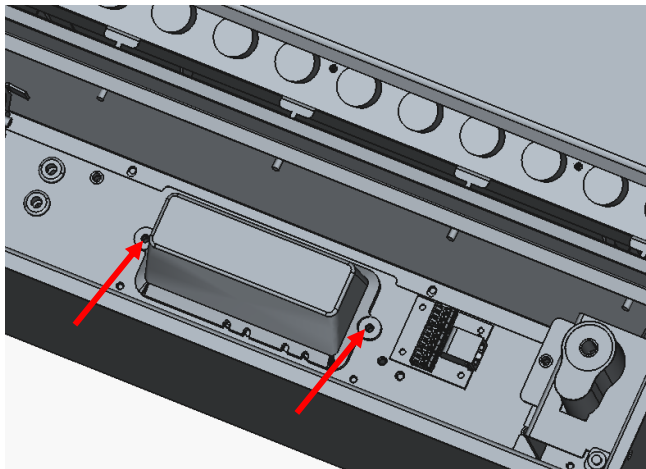
7. Slide the new generators in place of the old one.



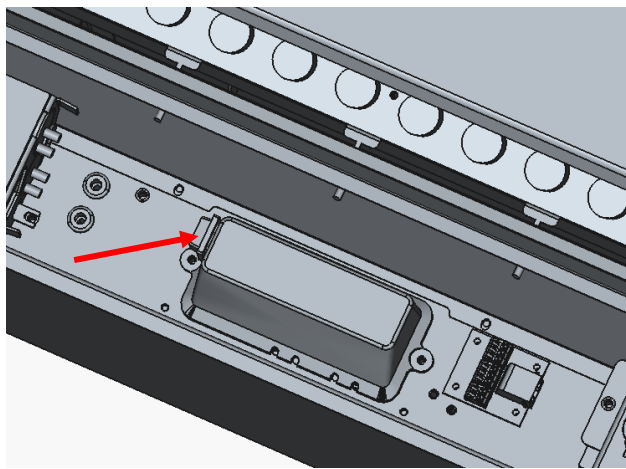
8. Place the wires in the notches.



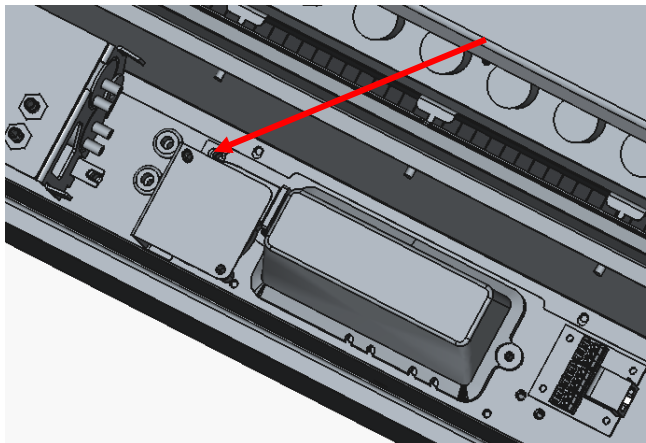
9. Replace the cover and secure it.



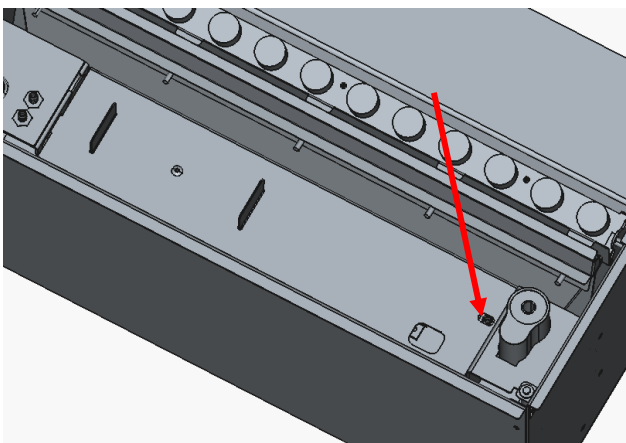
10. Insert the fan connector into the cover hole.



11. Tighten the fan screw.



12. Install and screw the cover.



Scan to contact us

CLEANING - Clean with a dry cloth and mild detergents when the unit is off and cool.

SERVICE - Reach out to us at <https://www.planikafires.pl/serwis>

Designed by: Planika

Made in Poland